



MAKING MUSIC IN WORSHIP

Our offering of musical worship should always be our best effort. We need to challenge ourselves to be creative in our thinking while pushing our talents and level of musicianship to new heights as we glorify God through our music.

Even music that is written down and prescribed to you affords a lot of room for creativity and interpretation. Understanding how to arrange and re-arrange songs will help us use our God-given creativity to serve the congregation. Be aware of musical ideas that go beyond just playing the notes.

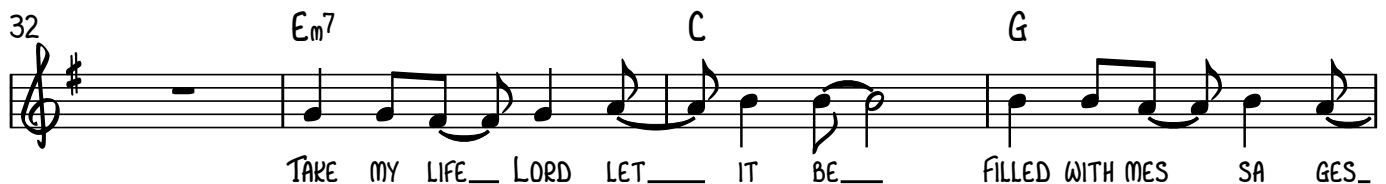
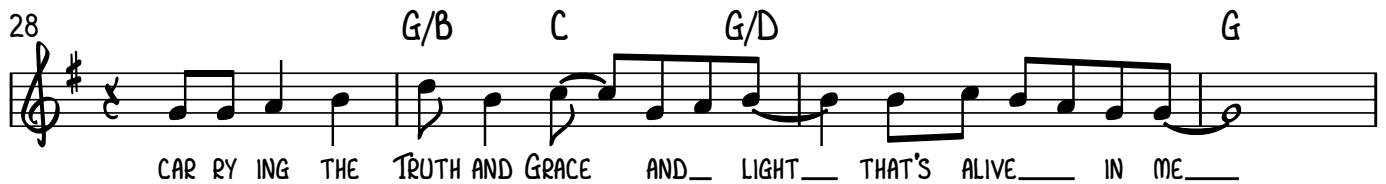
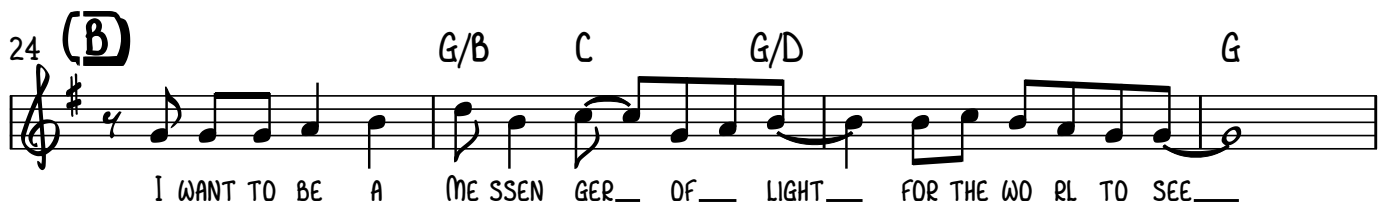
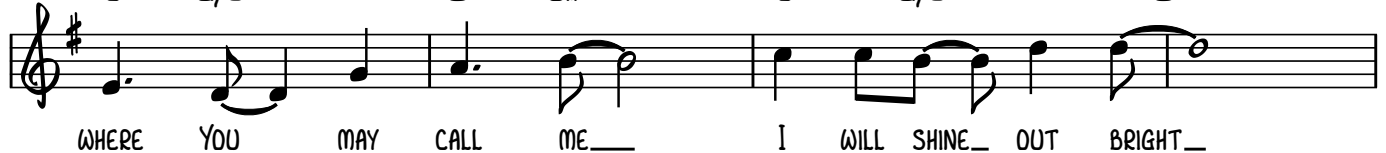
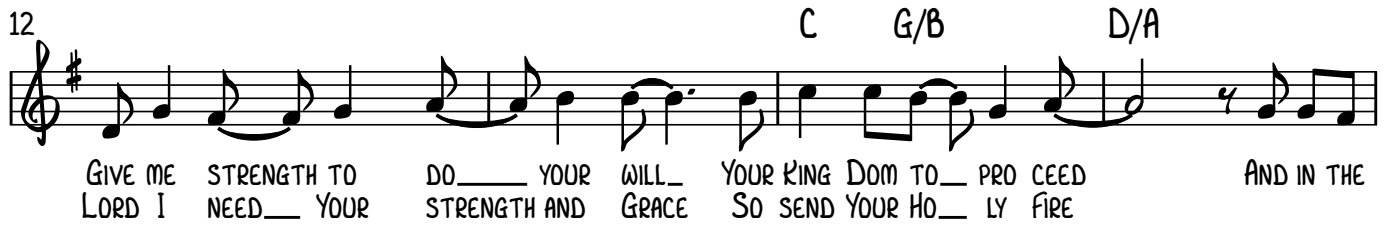
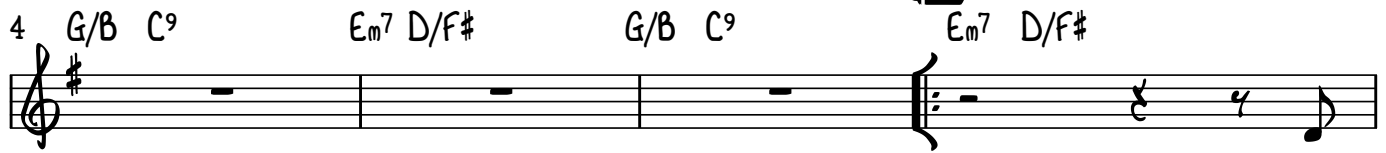
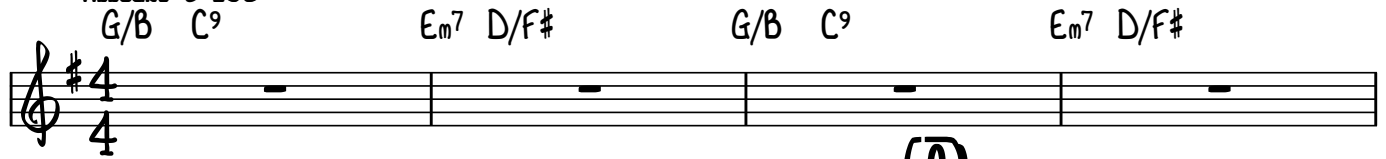
Look at the Lead Sheet for *Messenger of Light* and identify answers to the questions below. Make markings on the music provided.

- Where is climax of the piece?
- Where are the important lyrics? How can they be featured?
- What is a rhythmic pattern or groove that your whole worship team can use to tie the song together?
- List the dynamic levels in the song and their respective sections. Decide where dynamic changes need to happen.
- Can this piece include other music sections?
- Decide which instruments should play where (according to the line up of your group).
- Decide on a road map for the song (if it differs from the lead sheet).
- Will singers use harmony? Where would they use this?
- Mark in signals you need to give to your team.

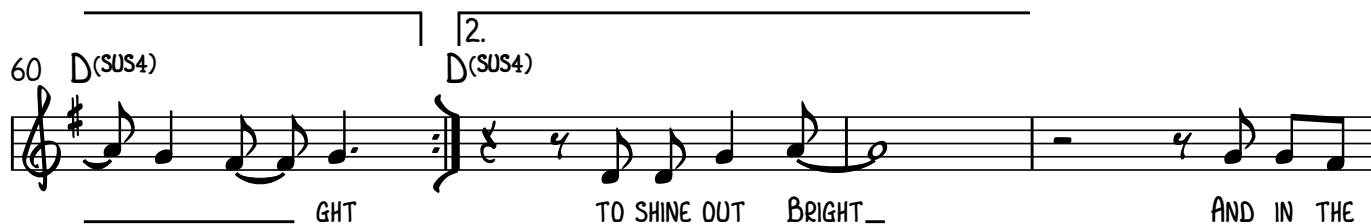
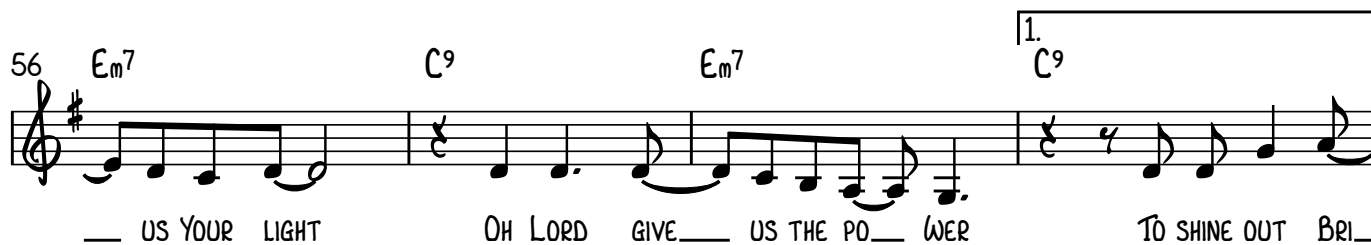
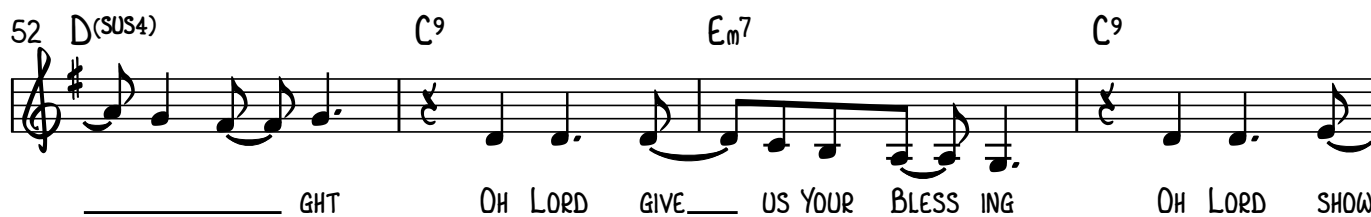
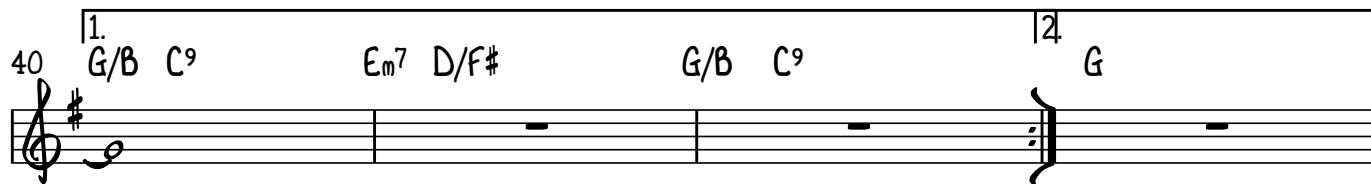
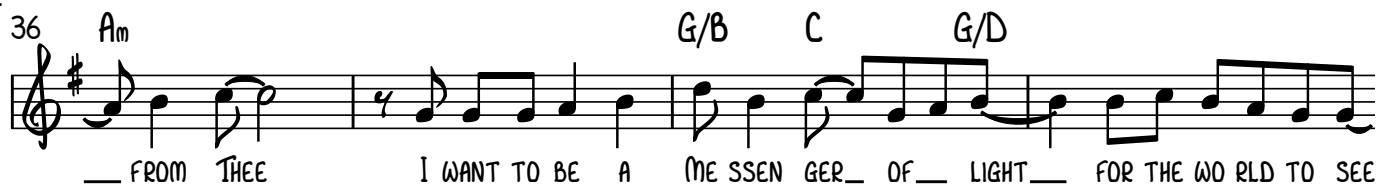
MESSENGER OF LIGHT

SIMON GOUGH

ALLEGRO $\text{♩} = 130$



2



72 (E) G/B C G/D G
I WANT TO BE A MESSENGER OF LIGHT FOR THE WORLD TO SEE

76 G/B C G/D G
CARRYING THE TRUTH AND GRACE AND LIGHT THAT'S ALIVE IN ME

80 E_m⁷ C G
TAKE MY LIFE LORD LET IT BE FILLED WITH MESSAGES

84 A_m G/B C G/D 1.
FROM THEE I WANT TO BE A MESSENGER OF LIGHT FOR THE WORLD TO SEE

88 G 12 G/B C G/D
HELP ME TO BE A MESSENGER OF LIGHT LORD MAKE ME A

92 G/B C G/D G
MESSENGER OF LIGHT FOR THE WORLD TO SEE

COMPARE AND CONTRAST

It is a good idea to look at how others arrange songs to help you formulate your ideas. On the next page, Simon and Heather (from the MAGA department) have made some suggestions. There are no right or wrong answers when it comes to arranging music for your congregation. As a leader always try to be open to new ideas and creative expressions.

- **Where is climax of the piece?**

The climax of the piece is at letter E.

- **Where are the important lyrics? How can they be featured?**

An important lyric is the word light found in sentences such as: "I want to be a messenger of light for the world to see" and "Carrying the truth and grace and light that's alive in me". You can feature this by adding a gradual crescendo from the start of each sentence to the word light.

- **What is a rhythmic pattern or groove that your whole worship team can use to tie the song together?**

There is a straight 4/4 rock beat that drives the song. At the chorus, during the line "Take my life and let it be, filled with messages from thee", you can change to a half time feel to accentuate these words of the traditional hymn.

- **List the dynamic levels in the song and their respective sections. Decide where dynamic changes need to happen.**

Intro	<i>forte</i>
Verse 1	<i>mezzo forte</i>
Pre Chorus	<i>mezzo forte</i>
Chorus	<i>forte</i>
Repeat for Verse 2, Pre Chorus and Chorus	
Bridge	First time <i>mezzo piano</i>
	Second Time build to <i>forte</i>
Pre Chorus	<i>mezzo piano</i> and build to a <i>forte</i>
Last two choruses	<i>forte</i>

- **Can this piece include other music sections?**

Yes. There are Brass and Choral Parts available by contacting
Simon_Gough@can.salvationarmy.org

- **Decide which instruments should play where (according to the line up of your group).**

We will let you work this one out with your group.

- **Decide on a road map for the song (if it differs from the Lead Sheet).**

Road map as written. In worship, a decision could be made to repeat a chorus.

- **Will singers use harmony? Where would they use this?**

Yes. In this song, harmony would be best added in the Pre Chorus and Chorus.

- **Mark in signals you need to give to your team.**

We will let you work this one out with the sightlines and needs that are specific to your team.

**TO GET A FREE COPY OF THE
WORSHIP TEAM, BAND AND CHOIR ARRANGEMENTS FOR
MESSENGER OF LIGHT
CONTACT SIMON_GOUGH@CAN.SALVATIONARMY.ORG**