



# CHILDREN'S TIME ACTIVITIES



Partners in Mission is an annual campaign when Salvationists from across Canada and Bermuda come together to raise funds to support the international work of The Salvation Army. This year, the goal for the Canada and Bermuda Territory is to raise **\$2.4 million**. These funds ensure that The Army continues to be a beacon of hope in all 134 countries where it works. This year, the Partners in Mission campaign is focusing on the **Indonesia Territory**.

Below, you will find **six different activities** that will help bring awareness to children about Partners in Mission, the International Work of The Salvation Army and the Indonesia Territory. These activities can be done during children's time in the Sunday service, as part of a Sunday School lesson or as a family activity at home.

At the end of some of the activities there is a suggested donation of a certain amount which represents the cost of something that could benefit someone living in Indonesia. Work together to put the equivalent amount towards the Partner's in Mission campaign.

## DID YOU KNOW?

- That Indonesia has over 279 million people, making it the world's fourth most populous country?
- That Indonesia has more than 17,000 Islands?



CANADA & BERMUDA TERRITORY  
**PARTNERS IN MISSION**





# 1 CULTURAL PRESENTATION



## THINGS YOU NEED

- Small Lego Kits

Have the children form groups of three and assign each person a role: **reader**, **builder**, and **supplier**.

In advance purchase a small individual lego kit. Give the instruction page to the readers and the blocks to the suppliers. Tell each group that it is the job of the reader to go through each of the instructions, one at a time. Once an instruction is read, it is the job of the supplier to find the lego pieces that are needed and then give them to the builders who will put them together. When the task is completed emphasize that it took everyone working together in order to finish.

In the Indonesian cultural there is a tradition of “**gotong royong**” which when translated means ‘**carrying a burden using one’s shoulder**’ or simply ‘**working together**.’ In Indonesia there are a lot of things that are often done through ‘gotong royong.’ Public facilities, streets and even places of worship are often constructed by people from the community coming together. Therefore, we can look at Partners in Mission as being ‘gotong royong’ where we all work together to raise funds to support The Salvation Army all around the world.

## PRAYER

Dear God,

We come before you with hearts full of gratitude for the diverse and vibrant nation of Indonesia. We lift up the people of this beautiful land, asking for your blessings upon them. May they find strength in unity and resilience in times of challenge. Protect and guide the families, communities, and leaders. We pray for the preservation of their rich culture and traditions, and for the healing of any divisions among them. May they embrace harmony and understanding, fostering a spirit of cooperation and love. In Your name, we pray. Amen.



### DID YOU KNOW?

- That The Partners in Mission Campaign is also known as Self-Denial?
- That Salvation Army churches in each of the 61 Territories, fundraise and contribute to the Self-Denial Campaign?



## 2 LET'S GET GROWING!



### THINGS YOU NEED

- Can of Corn
- Ear of Corn on the Cob



Set up a fun challenge to demonstrate the impact of tools on efficiency. First, give one person an ear of corn and a bowl. Challenge them to shuck every kernel off the ear and place them in the bowl, timing how long it takes them. Once they're finished, hand a second person a can of corn and a can opener, asking them to open the can and pour the corn into another bowl. How long did it take?

Farming is a common way for people to make a living or provide food for their families. However, the tools available—or lack thereof—can make a big difference in how challenging or efficient farming can be. In many parts of the world, farmers rely on simple tools or even their hands to cultivate crops, while others have access to advanced machinery that makes the work faster and easier. This activity helps us appreciate the hard work farmers do and how having the right tools can make a big difference in their lives and their communities.



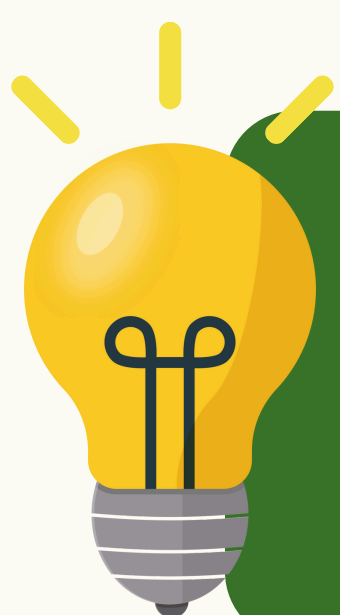
Cost of a Shovel: \$10

### PRAYER

Dear God,

we come to you with hearts full of gratitude for the farmers of Indonesia, who work tirelessly to provide food and sustenance for their families and communities. We ask for your blessings upon them as they labor in the fields. Lord, grant them strength and endurance in their daily tasks. May they be protected from harm and have favorable weather for their crops. Bless their hard work with abundant harvests and sustainable growth. In Your name, we pray. Amen.

### DID YOU KNOW?



- That 64% of poor rural households engage in agriculture production in order to support their family?
- Most smallhold farmers in Indonesia grow rice, soybeans, corn, fruits and vegetables?
- That climate change is taking a toll on farmers in Indonesia as there are often prolonged spells of bad weather such as drought?





# 3 TIME FOR SCHOOL!



## THINGS YOU NEED

- Construction Paper
- Glue Stick
- Scissors
- Markers



Give each child a piece of construction paper, a glue stick, scissors, markers and any other craft supplies you may have on hand. Tell the children they have the opportunity to use the supplies to make whatever they want. See what creative ideas they can come up with.

Education and learning are an essential part of a child’s daily life. However, we don’t often pause to appreciate the resources available to us—many of which are absolutely free! When a child arrives at school, they may find a playground filled with children running around, perhaps even swinging on fun playground equipment. Inside, there’s often a gym for sports, with balls and nets ready for exercise and play. Classrooms are equipped with desks, chairs, toys, and a variety of supplies, and each room has a teacher dedicated to their students. Sadly, this is not the reality for every child around the world. In some places, schooling is not free or is too far from home for children to have the opportunity to attend.



Cost of school tuition for one month: \$14

## PRAYER

Dear God,

We lift up the students of Indonesia to you today. We thank you for their dreams, aspirations, and the unique gifts you have given each one of them. We ask for your guidance and wisdom as they pursue their education. Help them to embrace learning with curiosity and enthusiasm. May they find joy in their studies and the strength to overcome challenges. We pray for their safety and well-being, both in and out of the classroom. Surround them with supportive teachers, mentors, and friends who encourage their growth and inspire their potential. We also pray for those who face obstacles in their education, whether due to financial difficulties, health issues, or other challenges. May they receive the support they need to continue their learning journey. In Your name, we pray. Amen.

### DID YOU KNOW?



- There are more than 52 million students in Indonesia?
- There are more than 400,000 schools in Indonesia?
- Indonesia has the largest education system globally?
- That the Salvation Army runs just over 100 schools in Indonesia?





# 4 HOME SWEET HOME!



## THINGS YOU NEED

- Paper
- Markers and Pens

Provide each child with a piece of paper, markers and pencil. Ask them who they consider to be their family and have them draw a family tree. After everyone has completed have them show their tree and tell who they included. Emphasize that sometimes we have people who care and love for us or are not related to us but can be like family.

For many children in Indonesia, there are different reasons why they are no longer able to live at home or with family – their parents have died, they live too far away from a school or their parents are unable to care for them. In these cases, the Salvation Army cares for the children in one of their children’s homes where each child is loved and cared for and is given access to everything they would need to have a safe and happy childhood – school, nutritious meals, medical care, life skills and so much more. Often, when someone has no place to call home, The Salvation Army steps in and becomes their home and their family.



Cost to provide clothing for one child in a children’s home: \$21



## PRAYER

Dear God,

We come before you with compassion for the children living in homes across Indonesia. We thank you for their lives and the potential you have placed within each of them. Surround these children with your love and protection. May they always feel safe, cherished, and valued. Grant them the comfort of community and the warmth of caring adults who nurture and guide them. Guide their education and growth, providing them with opportunities to learn and thrive. May they discover their passions and talents, empowering them to build a bright future. Above all, instill in them a sense of purpose and resilience. Help them to dream big and believe in the possibilities that lie ahead. In Your name, we pray. Amen.

### DID YOU KNOW?



- The Salvation Army in Indonesia operates 15 children’s homes, providing a safe and loving environment to more than 500 children?
- Many children living on the remote islands in Indonesia have very limited access to food, water and healthcare?
- That flooding and landslides on the Indonesian island of Sumatra in March 2024 affected about 15,500 children and their families?





## 5 IS THERE A DOCTOR IN THE HOUSE?

Use the game 'Simon says' to play the alternative "Doctor Says."

Choose someone to be the doctor and give instructions such as:

- Check your heartbeat
- Put on your stethoscope
- Wash your hands
- Take a deep breath



Having access to doctors and healthcare is important for us to stay healthy. The Salvation Army medical staff in Indonesia are able to provide services and medication for individuals who would not be able to afford it at another hospital. The medical staff also go out to remote places to care for people who do not have access to healthcare near them.



Cost of one package of pain medication: \$35

## PRAYER

Dear God,

We come before you with gratitude for the dedicated medical staff in Indonesia. We thank you for their commitment to healing and their unwavering service to the community. Lord, we ask for your protection over these healthcare workers as they face the challenges of their important roles. Grant them strength and resilience during long hours and difficult situations. May they find comfort in their calling and the impact they have on the lives of others. Grant them wisdom and discernment as they care for patients. May they be filled with compassion and empathy. Thank you for their dedication and service. May they be a source of hope and healing in the lives of those they serve. In Your name, we pray. Amen.

### DID YOU KNOW?

- That The Salvation Army in Indonesia has 6 hospitals along with several other clinics?
- That the emergency number in Indonesia is 112 rather than 911?





## 6 LET'S GO TO CHURCH!

Create a faith quest challenge for the children to complete, earning them points for each question. The questions should engage the children in thinking more about their church community and faith values. Some questions might include:

- Name five people that attend the church, other than your own family members
- Name 1 Parable and the lesson Jesus was trying to teach
- Write a Bible Verse
- What is 1 song that was recently sung in church?
- What time does the church service start?
- Why do we come to church?

There are many reasons why being connected to a church community is important. No matter where you live, church provides a sense of belonging and fosters relationships among individuals who share the same beliefs and values. It can also be a supportive community during difficult times. In Indonesia, there are over 24 million Christians who, in addition to being part of a Christian community, serve as beacons of hope for those who are marginalized or disadvantaged. Many churches have outreach programs that help feed the hungry, care for orphaned children, and offer shelter to those without a home—all while sharing God's love with them.

## PRAYER

Dear God,

We come before you to lift up The Salvation Army churches in Indonesia. We thank you for their mission of service, compassion, and hope in the communities they serve. We ask for your blessing upon the leaders, staff, and volunteers who work tirelessly to spread your love and care. Grant them wisdom and strength as they navigate the challenges they face and inspire them to continue their vital work. Help them to be a beacon of hope for the vulnerable and marginalized, providing support, encouragement, and practical assistance. May their efforts bring healing, restoration, and transformation to the lives they touch. Lord, we also ask for your provision in their ministries, ensuring they have the resources they need to fulfill their mission effectively. Strengthen their partnerships within the community and beyond, so they can collaborate in addressing the needs around them. As they share the message of salvation and the love of Christ, may many come to know you and experience the joy of a life transformed by your grace. In Your name, we pray. Amen.

### DID YOU KNOW?

- That The Salvation Army began its work in Indonesia in 1894?
- That there are 426 Salvation Army churches in Indonesia?
- That there are 11 different languages spoken in Salvation Army churches throughout Indonesia?
- That there are 803 active officers serving in Indonesia with and an additional 82 cadets in training college?

