

Music Theory

Placement Test (Answer Key)

INSTRUCTIONS: Start at the beginning and answer as many questions as you can! If you don't know a question, you may skip it and move to the next question.

1A Name the notes.



 C G A B F A



 D B E D G C

2A Circle the time signature. Write in the counts underneath.



2B Name the notes.

D# Fb A# Gb B
 C# Eb F# Ab Bb

2C Label each pair as either a semitone (S) or a tone (T).

S T S T
 S T T S

3A Write the following scales ascending and descending in half notes. Repeat the top note. Use accidentals instead of key signatures.

F major

G major

3B Write the counts underneath.

(i)

4 1 + 2 + 3-4 + 1-2 + 3 + a 4 +

1 a 2 e + 3 4 e + a 1-2-3 4 - 1 2 + 3 + 4 1-2-3-4

(ii)

Andante ♩ = 88

1 2 3 4-5 6 1 2 3 4-5 6 1 2 3 4-5 6 1 2 3 4-5-6

4A Write the following clefs, key signatures, and time signatures.

Treble Clef
D major
2/4

Treble Clef
Bb major
6/8

Bass Clef
Eb major
3/4

Treble Clef
E major
4/4

Bass Clef
A major
9/8

4B Write the following major scale ascending and descending using whole notes. Repeat the top note. Use accidentals instead of a key signature.

Ab major

4C Write the counts underneath.

Allegro ♩. = 104

4 a 1 a 2 a 3 4 a 1 a 2 a 3 4 a

1 a 2 a 3 4 a 1 - 2 3

5A Write a chromatic scale in half notes, ascending and descending, starting on the given note. Write the top note only once.

5B Name the following intervals – both the number and type: Major (maj), Minor (min), or Perfect (per). Watch out for the clefs.


(i)

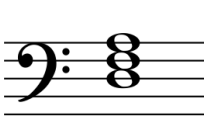
_____ maj 3 _____ per 5 _____ per 4 _____ min 6 _____ maj 2 _____


(ii)


_____ min 3 _____ maj 7 _____ per 8 _____ per 1 _____ min 3 _____

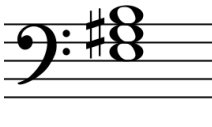
5C Name the following triads.

(a) 
 G


(b) 
 Dm

(c) 
 Cm

(d) 
 A♭

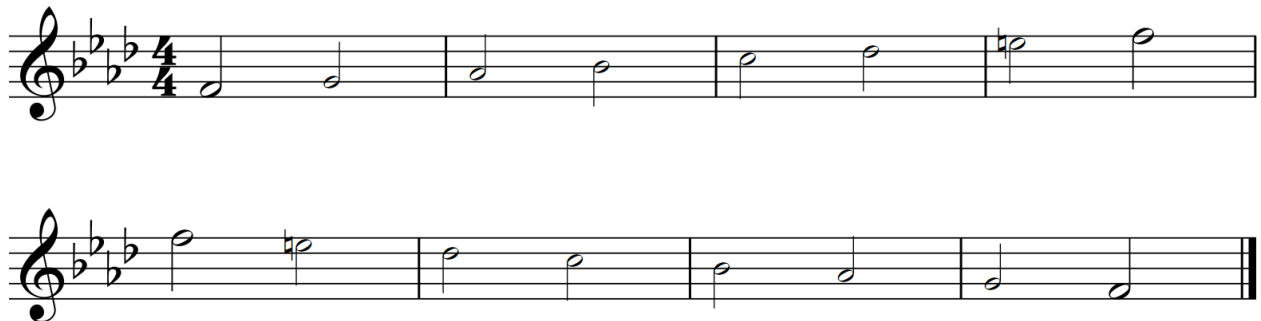
(e) 
 E

6A Classify the following intervals by number and type: Augmented (aug) or Diminished (dim).


 aug 3 dim 4 dim 7 aug 2 aug 4

6B Write the following minor scales, ascending and descending in half notes.

(i) F harmonic minor in Treble Clef, using a key signature.



(ii) Bb melodic minor in Bass Clef, using accidentals.

6C Name the keys indicated by the key signature.

(i) Major

 B major Ab major Bb major G major A major Cb major

(ii) Minor

 C minor C# minor D minor A minor Bb minor D# minor

6D Write the counts underneath.

Moderato ♩ = 100

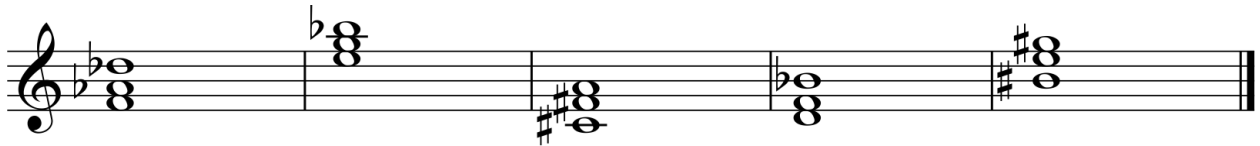
f + 1 + a 2 + 1 + 2 + 1 e + 2 + 1 - 2

7A Name the following triads, both the name and type: Augmented (aug) or Diminished (dim).



Faug Bdim Ebdim Eaug

7B Name the following triads. Include the name, type and inversion.



Db 1st Edim Root F#m 2nd Bb 1st Eaug 2nd

7C Transpose the following piece from E major up to Bb major.

Allegro vivace ♩ = 144



7D Transpose the following piece, written for Trumpet in C, to make it playable for a Cornet in Bb.

Trumpet in C

Cornet in Bb

Trumpet in C

Cornet in Bb

7E Write in the counts underneath.

Moderato ♩ = 80

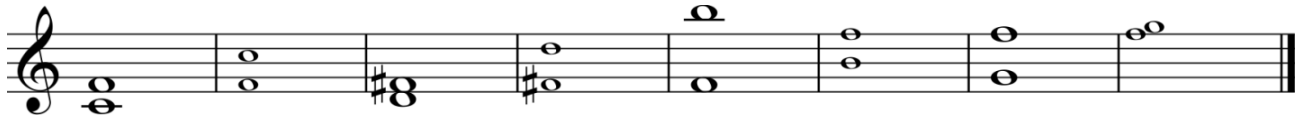
1 - 2 3 4 + 5 + 1 2 3 4 - 5 1 2 3 4 - 5

1 - 2 3 + 4 + 5 + 1 2 3 4 - 5 1 + 2 3 + 4 5

8A Name the following compound intervals.

per 11 min 9 mai 10 per 12

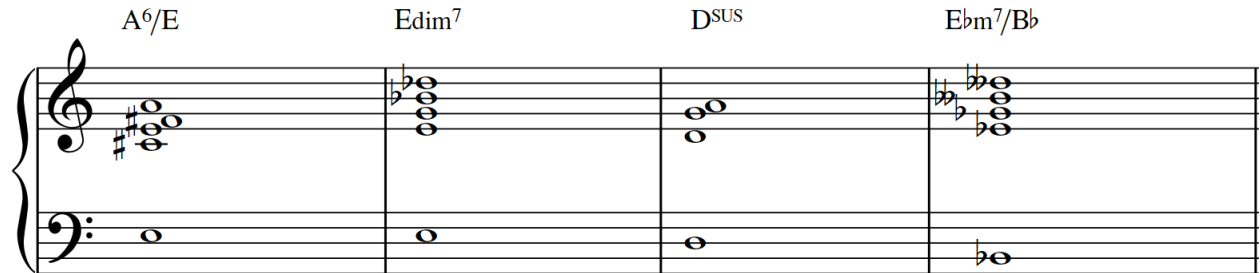
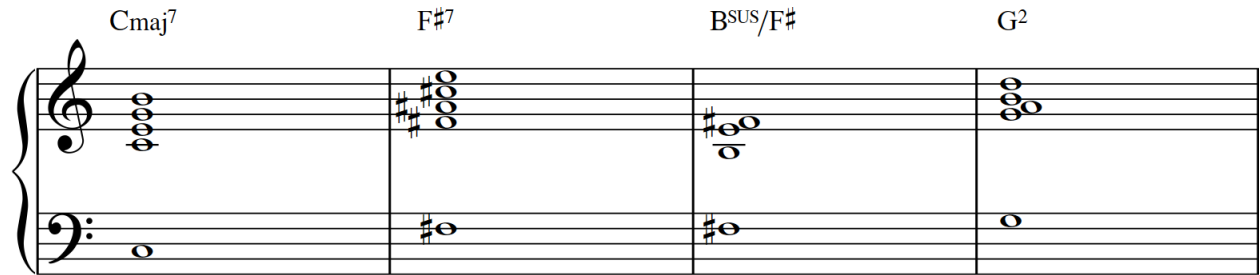
8B Name the interval given. Write the inversion and name the new interval.



per 4 per 5 maj 3 min 6 aug 11 dim 5 min 7 maj 2

8C Write chords indicated by the chord symbols given below.

TEACHER NOTE: Answers may vary slightly between students in placement of notes.



8D Write in the counts underneath.

3 + 3 + 2 + 2
3 + 3 + 2 + 2

Allegro ♩. = 144

1-2 3 4-5 6 7 8 9 10 | 1 2 3 4-5 6 7 8 9 10

2 + 2 + 3 + 3
2 + 2 + 3 + 3

1-2 3-4 5 6 7 8 9 10 | 1-2 3-4 5-6-7-8-9-10

2 + 2 + 3 + 3
3 + 3 + 2 + 2

1 2 3 4 5 6 7 8 9 10 | 1-2 3 4 5 6 7-8-9-10