

Music Theory

Test for Level Five (Answer Key)

1. Write the enharmonic equivalent to the note given. (10 marks)



Two musical staves are shown. The top staff is in treble clef and contains five measures of music with notes: G#4, Bb4, Bb4, C#5, Bb4, and G#4. The bottom staff is in bass clef and contains five measures of music with notes: G#3, Bb3, Bb3, C#4, Bb3, and G#3. Each staff ends with a double bar line.

2. Write a chromatic scale in quarter notes, ascending and descending. (12 marks)



Two musical staves are shown. The top staff is in treble clef with a 4/4 time signature and contains four measures of an ascending chromatic scale: C4, C#4, D4, D#4, E4, E#4, F4, F#4, G4, G#4, A4, A#4, B4, B#4, C5. The bottom staff is in treble clef and contains four measures of a descending chromatic scale: C5, B#4, B4, A#4, A4, G#4, G4, F#4, F4, E#4, E4, D#4, D4, C#4, C4. Each staff ends with a double bar line.

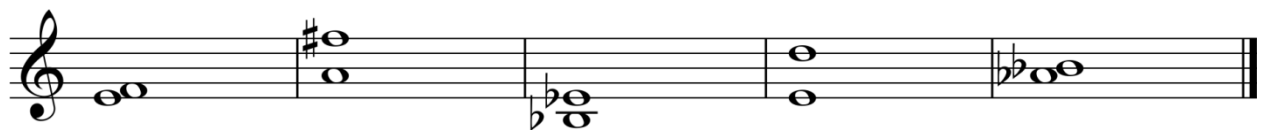
3. **Fill in the blanks.** (10 marks)

- a) What is a term used for the distance between two notes?
Interval
- b) Harmonic intervals are when the notes occur at the same time.
- c) Melodic intervals are when the notes occur one after the other.
- d) In a major triad, what type of interval is from the root to the top note?
Perfect 5th .
- e) In a minor triad, is the third of the triad major or minor?
Minor
- f) List the intervals that are perfect in both major and minor keys.
per 1 per 4 per 5 per 8

4. **Name the following intervals. Include both the number and type:**
Major (maj), Minor (min) or Perfect (per). (2 marks each = 20 marks total)



maj 3 per 5 maj 7 min 3 per 4



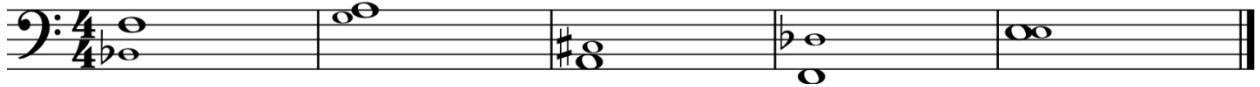
min 2 maj 6 per 4 min 7 maj 2

5. Write the following melodic intervals. (2 marks each = 10 marks total)



per 8 below per 4 above min 3 below maj 6 above min 7 above

6. Write the following harmonic intervals. (2 marks each = 10 marks total)



per 5 below maj 2 below maj 3 above min 6 above per 1

7. Name the following triads. (2 marks each = 10 marks total)



 G



 Dm



 Cm



 Ab

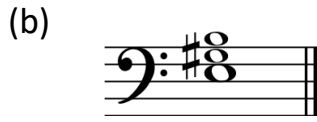


 E

8. Write the following triads. (2 marks each = 10 marks total)



A major



E major



D major



G minor



F minor

9. Match the definitions to the correct term. Write the number of the correct answer in the blank. (9 marks)

<i>fp</i>	<u>4</u>	1. Slow (mm. = 50-56)
<i>Allegretto</i>	<u>5</u>	2. Suddenly
<i>Lento</i>	<u>1</u>	3. At a moderate tempo (mm. = 88-100)
<i>Dolce</i>	<u>6</u>	4. Loud, then immediately soft
<i>Presto</i>	<u>9</u>	5. Fairly fast (mm. = 104-120)
<i>Subito</i>	<u>2</u>	6. Sweetly
<i>Andantino</i>	<u>8</u>	7. In a similar/continued style
<i>Moderato</i>	<u>3</u>	8. A little faster than <i>andante</i>
<i>Simile</i>	<u>7</u>	9. Very fast (mm. = 184-200)

MUSIC THEORY - Answer Sheet LV5



230-300-3050