

Music Theory

Test for Level Four (Answer Key)

1. Write major scales in half notes, starting on the given notes, ascending and descending. Use accidentals instead of key signatures.

(6 marks each = 12 marks total)

(a) Eb major

The image shows two staves of musical notation for the Eb major scale in 4/4 time. The first staff contains the ascending scale: Eb (half note), E (half note), F (half note), G (half note), Ab (half note), Bb (half note), C (half note), and Eb (half note). The second staff contains the descending scale: Eb (half note), D (half note), C (half note), Bb (half note), Ab (half note), G (half note), F (half note), and Eb (half note). Both staves end with a double bar line.

(b) A major

The image shows two staves of musical notation for the A major scale in 4/4 time. The first staff contains the ascending scale: A (half note), B (half note), C# (half note), D (half note), E (half note), F# (half note), G# (half note), and A (half note). The second staff contains the descending scale: A (half note), G# (half note), F# (half note), E (half note), D (half note), C# (half note), B (half note), and A (half note). Both staves end with a double bar line.

2. Write the following major scales ascending and descending using whole notes. Use accidentals instead of key signatures. Repeat the top note.

(6 marks each = 12 marks total)

(a) D major

(b) Bb major

3. Write the following clefs, key signatures and time signatures. (15 marks)

Treble Clef
D major
2/4

Treble Clef
Bb major
6/8

Bass Clef
Eb major
12/8

Treble Clef
E major
4/4

Bass Clef
A major
9/8

4. Name each major key signature. (5 marks)



E major



Eb major



Bb major



Ab major



A major

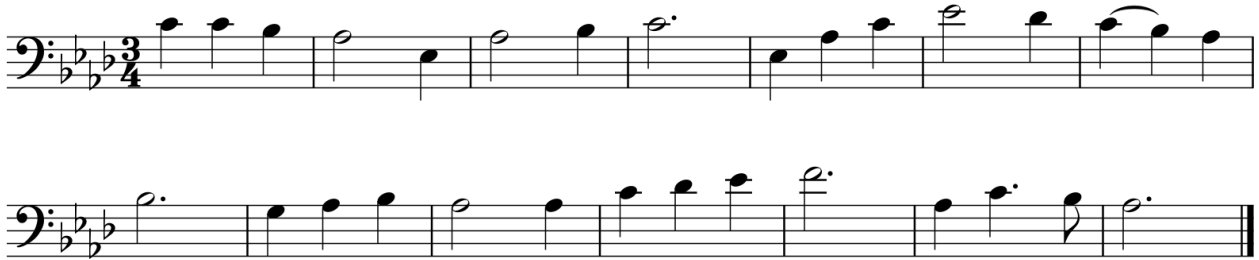
5. Make the following examples easier to read. Circle the rest-reading difficulties in the first line. Re-write the same passage on the second line.

(14 marks total)



6. Name the key signature for each piece. Write the time signature at the beginning of the piece. (4 marks)

(a) Key: Ab major



(b) Key: D major



7. Write the counts for each example. (25 marks total)

(a) (4 marks)

1 2 a 3 4 1 + 2 3 + a 4 e + 1-2-3 4 1 + a 2 + a 3 + a 4

(b) (5 marks)

Allegro

1 2 3 + a 1 a 2 3 + a 1 a 2 + a 3 + a

1 a - 2 + a 3 + a 1 a 2 3

(c) (8 marks)

Andante

1-2-3-4-5-6 1-2 3 4-5-6 1-2 3 4-5-6 1-2 3 4-5-6

1-2-3-4-5-6 1-2 3 4-5-6 1 2 3 4-5 6 1-2 3 4-5-6

(d) (8 marks)

Allegro

1 2 3 4 1 2 3 a 4 1 - 2 -3 a 4 1 a 2 a 3 a 4

1 - 2 -3 a 4 1 2 - 3 4 a 1 - 2 a 3 4 a 1 - 2 3 - 4

8. Match the definitions to the correct symbol/term. Write the number of the correct answer in the blank. (9 marks)



4

1. Repeat signs

D.C. al Coda

8

2. 1st-time ending

Fine

7

3. Repeat back to the beginning of the piece

D.C.

3

4. Coda symbol



1

5. Repeat back to the designated sign and stop where the word *Fine* appears



9

6. Jump to the Coda

D.S. al Fine

5

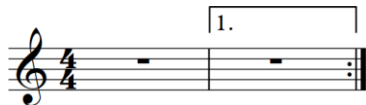
7. End

To Coda



6

8. Repeat back to the beginning. Then, at the designated sign, jump to the Coda



2

9. Dal Segno symbol

MUSIC THEORY - Answer Sheet LV4



230-300-3040