

Music Theory

Test for Level Four

1. Write major scales in half notes, starting on the given notes, ascending and descending. Use accidentals instead of key signatures.

(6 marks each = 12 marks total)

(a) Eb major



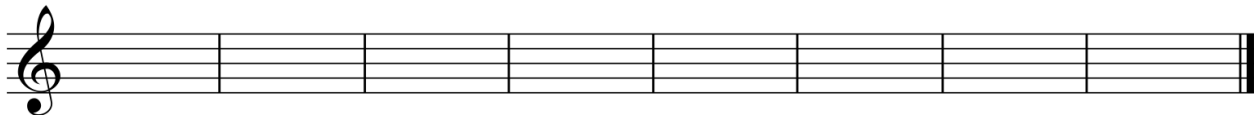
(b) A major



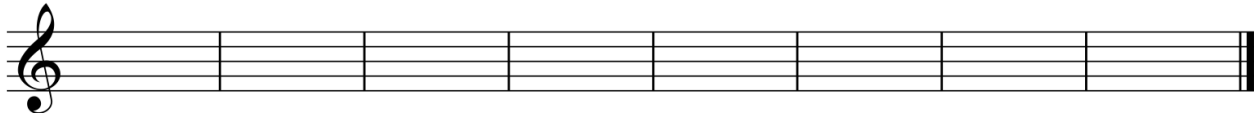
2. Write the following major scales ascending and descending using whole notes. Use accidentals instead of key signatures. Repeat the top note.

(6 marks each = 12 marks total)

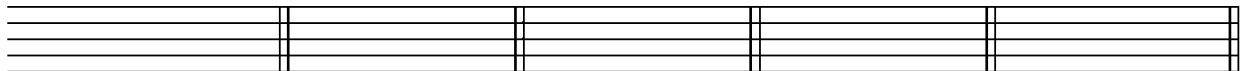
(a) D major



(b) Bb major



3. Write the following clefs, key signatures and time signatures. (15 marks)



Treble Clef
D major
2/4

Treble Clef
Bb major
6/8

Bass Clef
Eb major
12/8

Treble Clef
E major
4/4

Bass Clef
A major
9/8

4. Name each major key signature. (5 marks)

(a) 

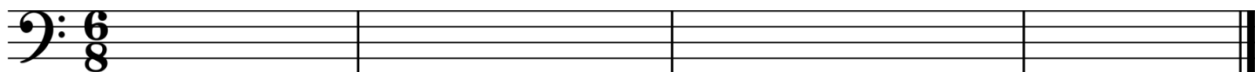
(b) 

(c) 

(d) 

(e) 

5. Make the following examples easier to read. Circle the rest-reading difficulties in the first line. Re-write the same passage on the second line.
 (14 marks total)

6. Name the key signature for each piece. Write the time signature at the beginning of the piece. (4 marks)

(a) Key: _____

Two staves of musical notation in bass clef. The first staff contains 10 measures of music, and the second staff contains 8 measures. The key signature has two flats (B-flat and E-flat), and the time signature is 4/4. The melody consists of quarter and half notes, with some notes beamed together.

(b) Key: _____

Two staves of musical notation in treble clef. The first staff contains 5 measures of music, and the second staff contains 8 measures. The key signature has two sharps (F-sharp and C-sharp), and the time signature is 4/4. The melody consists of quarter and eighth notes, with some notes beamed together.

7. Write the counts for each example. (25 marks total)

(a) (4 marks)



(b) (5 marks)



(c) (8 marks)



(d) (8 marks)



8. Match the definitions to the correct symbol/term. Write the number of the correct answer in the blank. (9 marks)



1. Repeat signs

D.C. al Coda

2. 1st-time ending

Fine

3. Repeat back to the beginning of the piece

D.C.

4. Coda symbol



5. Repeat back to the designated sign and stop where the word *Fine* appears



6. Jump to the Coda

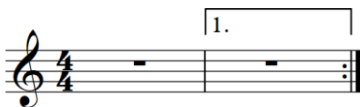
D.S. al Fine

7. End

To Coda



8. Repeat back to the beginning. Then, at the designated sign, jump to the Coda



9. Dal Segno symbol

MUSIC THEORY - Test LV4



230-300-2040