

Name: _____

Music Theory

Test for Level Two

1. Write the number of beats for the following notes and rests.
(6 marks)

 = _____ beats

 = _____ beats

 = _____ beats

 = _____ beats

 = _____ beats

 = _____ beats

2. Change each of the whole notes into half notes by adding a stem.
(6 marks)



3. Answer the following questions:
(2 marks)

How many beats are in $\frac{2}{4}$ time? _____ beats.

How many beats are in $\frac{3}{4}$ time? _____ beats.

4. Write the counts to the following pieces.
(10 marks each = 30 marks total)

(a)

Two staves of musical notation in 4/4 time. The first staff contains a melody of quarter notes: C4, D4, E4, F4, G4, A4, B4, C5, followed by a quarter rest, then G4, F4, E4, D4, C4, and a half rest. The second staff contains a bass line of quarter notes: C4, D4, E4, F4, G4, A4, B4, C5, followed by a quarter rest, then G4, F4, E4, D4, C4, and a half rest.

(b)

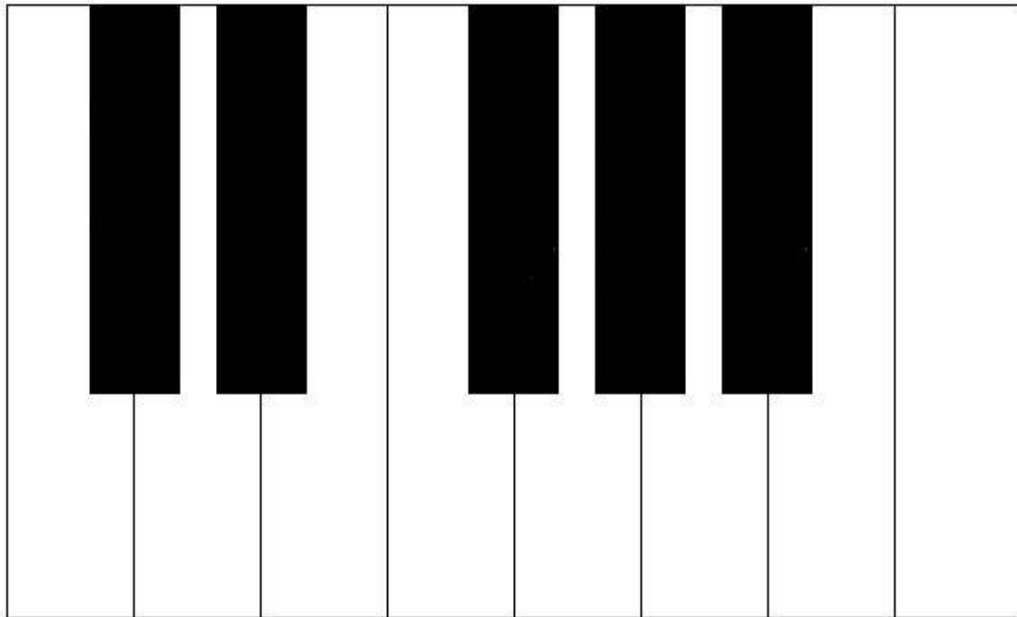
Two staves of musical notation in 3/4 time. The first staff contains a melody of quarter notes: C4, D4, E4, F4, G4, A4, B4, C5, followed by a quarter rest, then G4, F4, E4, D4, C4, and a half note G4. The second staff contains a bass line of quarter notes: C4, D4, E4, F4, G4, A4, B4, C5, followed by a quarter rest, then G4, F4, E4, D4, C4, and a half note G4.

(c)

Two staves of musical notation in 2/4 time. The first staff contains a melody of quarter notes: C4, D4, E4, F4, G4, A4, B4, C5, followed by a quarter rest, then G4, F4, E4, D4, C4, and a half note G4. The second staff contains a bass line of quarter notes: C4, D4, E4, F4, G4, A4, B4, C5, followed by a quarter rest, then G4, F4, E4, D4, C4, and a half note G4.

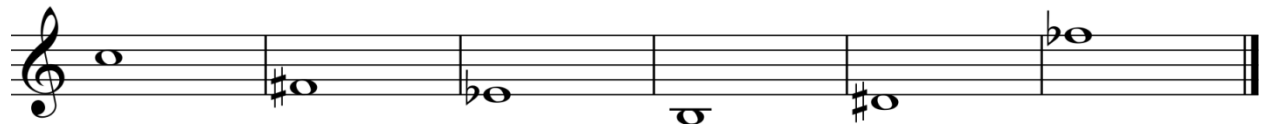
5. Name the notes on the keyboard. (13 marks)

Black keys: _____



White keys: _____

6. Name the following notes. (12 marks)





7. Label each pair as either a semitone (S) or a tone (T). (6 marks)





8. Match the definitions to the correct term. Write the number of the correct answer in the blank. (8 marks)

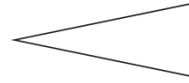
- | | | |
|---------------------|-------|-------------------------------|
| <i>Presto</i> | _____ | 1. Gradually getting louder |
| <i>Adagio molto</i> | _____ | 2. Very soft |
| <i>Diminuendo</i> | _____ | 3. Getting faster |
| <i>A tempo</i> | _____ | 4. Back to the original tempo |
| <i>Accelerando</i> | _____ | 5. Very fast |
| <i>Rallentando</i> | _____ | 6. Getting slower |
| <i>Pianissimo</i> | _____ | 7. Gradually getting softer |
| <i>Crescendo</i> | _____ | 8. Very slow |

9. Match the symbol to the correct term by drawing lines. (10 marks)

Bar Line



Pianissimo



Diminuendo



Flat



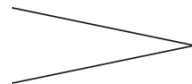
Time Signature



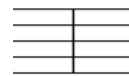
Natural



Fortissimo



Sharp



Crescendo



Double Bar Line



MUSIC THEORY - Test LV2



230-300-2020