

Name: _____

Music Theory

Test for Level Six

1. Name the following harmonic intervals. (8 marks)



2. Write the following melodic intervals. (8 marks)



aug 4 above

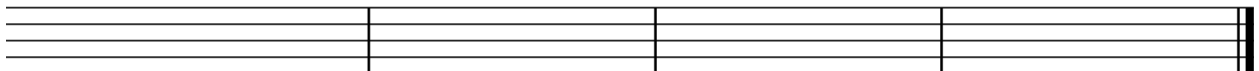
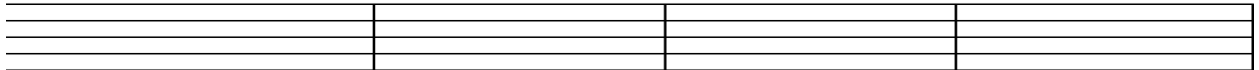
dim 6 below

dim 5 below

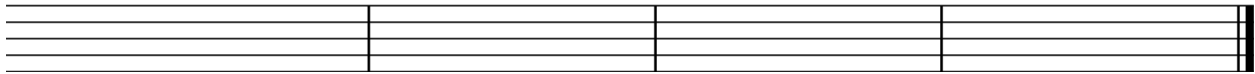
aug 3 above

3. Write the following scales ascending and descending in half notes. Use accidentals. Repeat the top note. (6 marks each = 18 marks total)

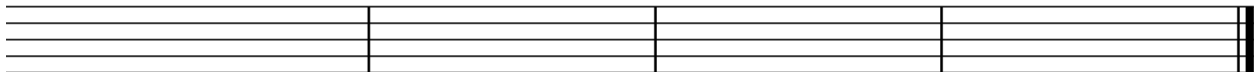
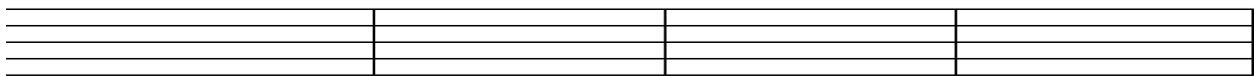
(a) D natural minor in the Treble Clef



(b) Bb melodic minor in the Bass Clef

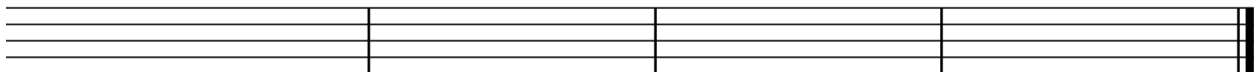


(c) F# harmonic minor in the Treble Clef

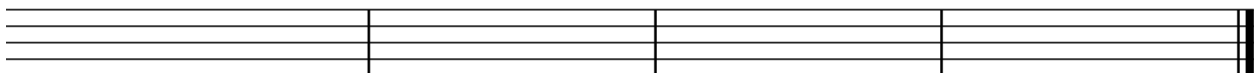
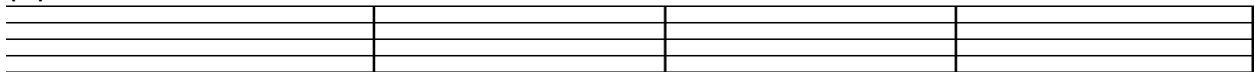


4. Write the following scales ascending and descending in half notes. Use a key signature. Repeat the top note. (6 marks each = 12 marks total)

(a) Ab harmonic minor in the Bass Clef



(b) C# melodic minor in the Treble Clef



5. Name the relative major or minor for the given key. (6 marks)

- a) C minor Relative major: _____
- b) Bb major Relative minor: _____
- c) A major Relative minor: _____
- d) Bb minor Relative major: _____
- e) G minor Relative major: _____
- f) D major Relative minor: _____

6. Name the key signatures. (5 marks)



_____ major



_____ minor



_____ minor



_____ major

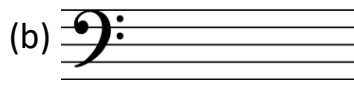


_____ major

7. Write the following key signatures. (5 marks)



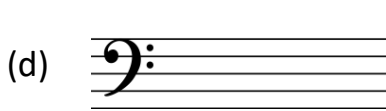
D major



F# minor



C# major



B minor



Eb minor

8. Name the key of each example. Write the counts for each of the following. (14 marks)

(a) Key: _____



(b) Key: _____

Moderato ♩ = 84



9. Write phrase markings over the following melodies (5 marks each = 10 marks)

(a)

Allegro ♩ = 104

The musical score for part (a) consists of three staves of music in 4/4 time, key of B-flat major (two flats). The tempo is marked 'Allegro' with a quarter note equal to 104 beats. The first staff begins with a dynamic marking of *f* (forte). The melody is composed of eighth and quarter notes, with some rests and a final half note. The second and third staves continue the melody with similar rhythmic patterns and note values.

(b)

Andante moderato ♩ = 92

The musical score for part (b) consists of three staves of music in 3/4 time, key of D major (one sharp). The tempo is marked 'Andante moderato' with a quarter note equal to 92 beats. The melody is composed of quarter and eighth notes, with some rests and a final half note. The first staff begins with a dynamic marking of *f* (forte). The second and third staves continue the melody with similar rhythmic patterns and note values.

10. Fill in the blanks with the correct number to identify which definitions on the right match the words or symbols on the left. (12 marks)

Meno mosso _____

Allargando _____

Vivace _____

Piu _____

Larghetto _____

Poco a poco _____

Prestissimo _____

Molto _____

Piu mosso _____

Stringendo _____

Meno _____

Largo _____

1. More movement

2. Very slow (mm. = 50-60)

3. As fast as possible (mm. = 144+)

4. A lot

5. Getting faster

6. More

7. Slower and broader

8. A little faster than *largo*

9. Less

10. Very fast (mm. = 132+)

11. Less movement

12. Little by little

MUSIC THEORY - Test LV6



230-300-2060